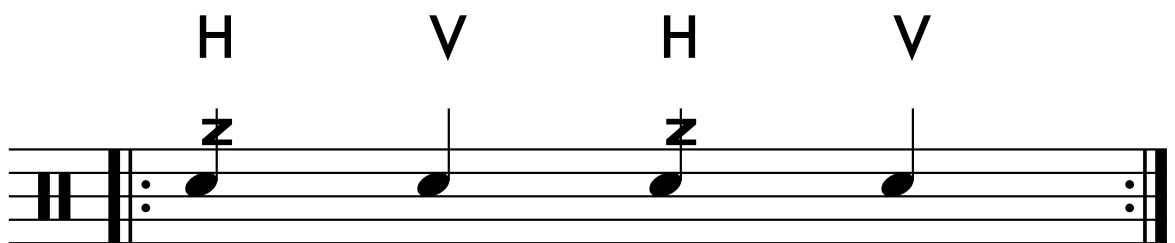
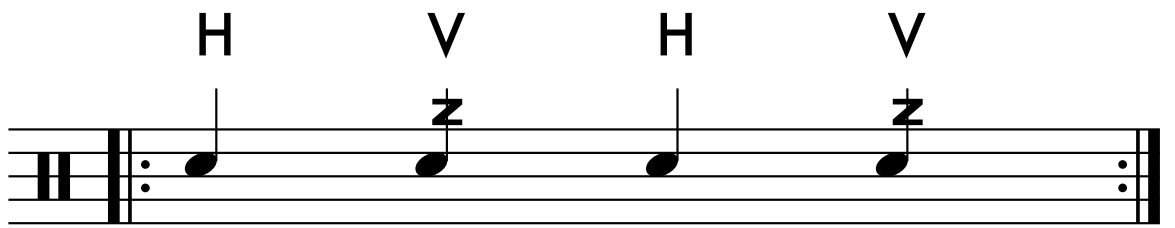


VIGTIGT: PRES STIKKEN NED I SKINDET OG GIV SLIP MED DET SAMME DEREFTER.  
HVIRVLEN SKAL VARE HELT HEN TIL DET NÆSTE SLAG, LIGE GYLDIGT OM DET ER  
ET SLAG MED ELLER UDEN HVIRVEL.  
LAV SLAGENE MED SAMME AFSTAND TIL REIFEN MED BEGGE HÆNDER.

1

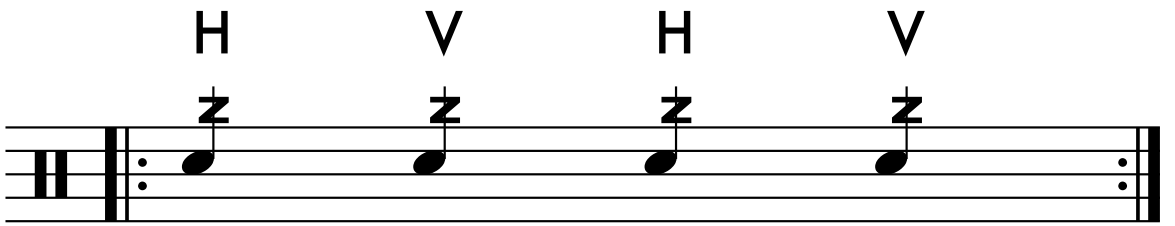


2



A musical staff with a treble clef and a key signature of one flat (B-flat). The staff contains four quarter notes. Above the first and third notes is the letter 'H', and above the second and fourth notes is the letter 'V'. Below each note is a vertical line with a small horizontal bar at the bottom, resembling a 'z' character. The staff begins with a double bar line and a repeat sign, and ends with a double bar line and a repeat sign.

3



A musical staff with a treble clef and a repeat sign. The staff contains four quarter notes. Above the first and third notes is the letter 'H', and above the second and fourth notes is the letter 'V'. Each note has a 'z' symbol above it. The staff ends with a double bar line and repeat dots.